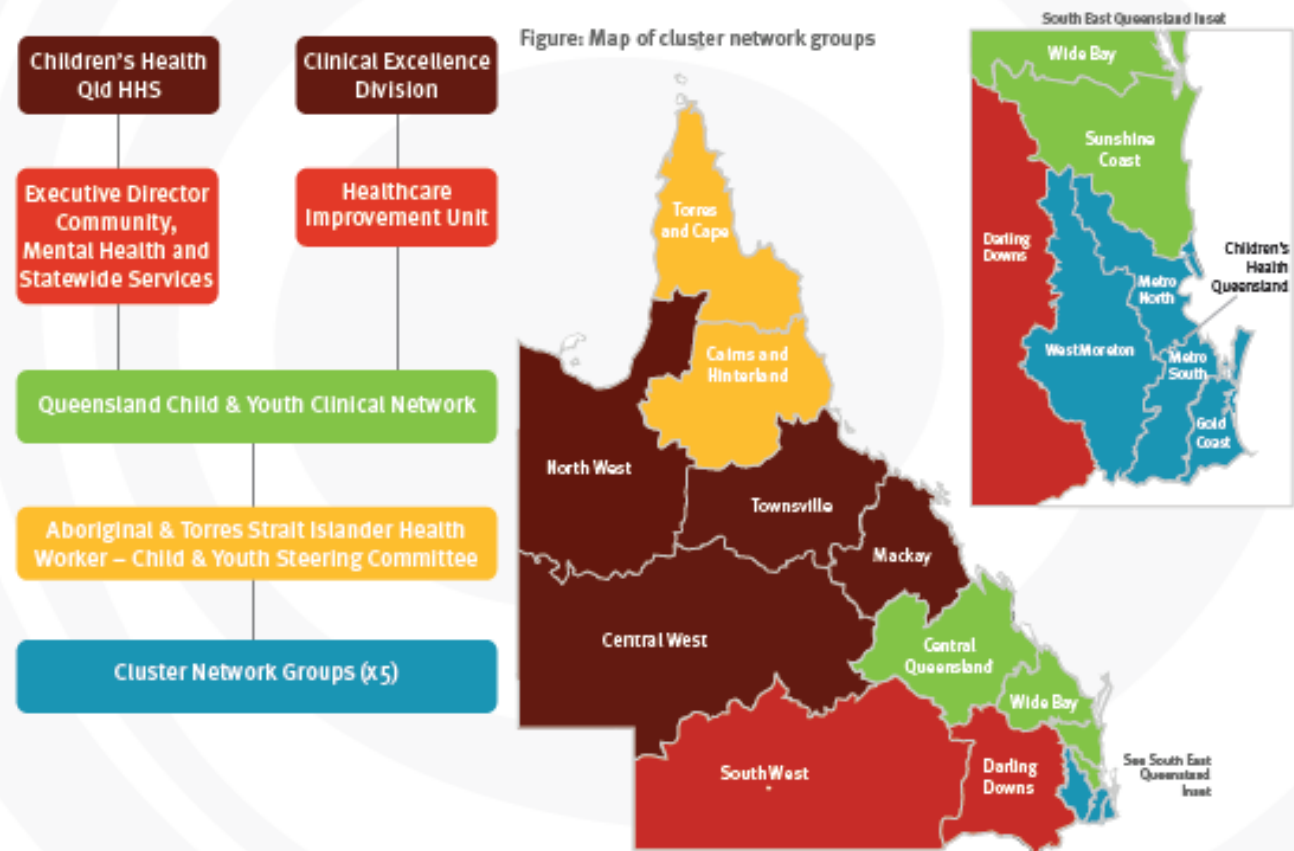


Connecting and empowering Aboriginal and Torres Strait Islander maternal, child and youth health workforce to drive cultural change and improve health outcomes

Practice Change - Statewide Governance Model

There is a clear need to develop a sustainable, integrated and equitable governance model which fosters statewide



“These meetings provide a great opportunity to network”

“The impact of forming this cluster group has been very positive”

“the meeting today was very informative and having the chance for everyone to speak freely was just great.”