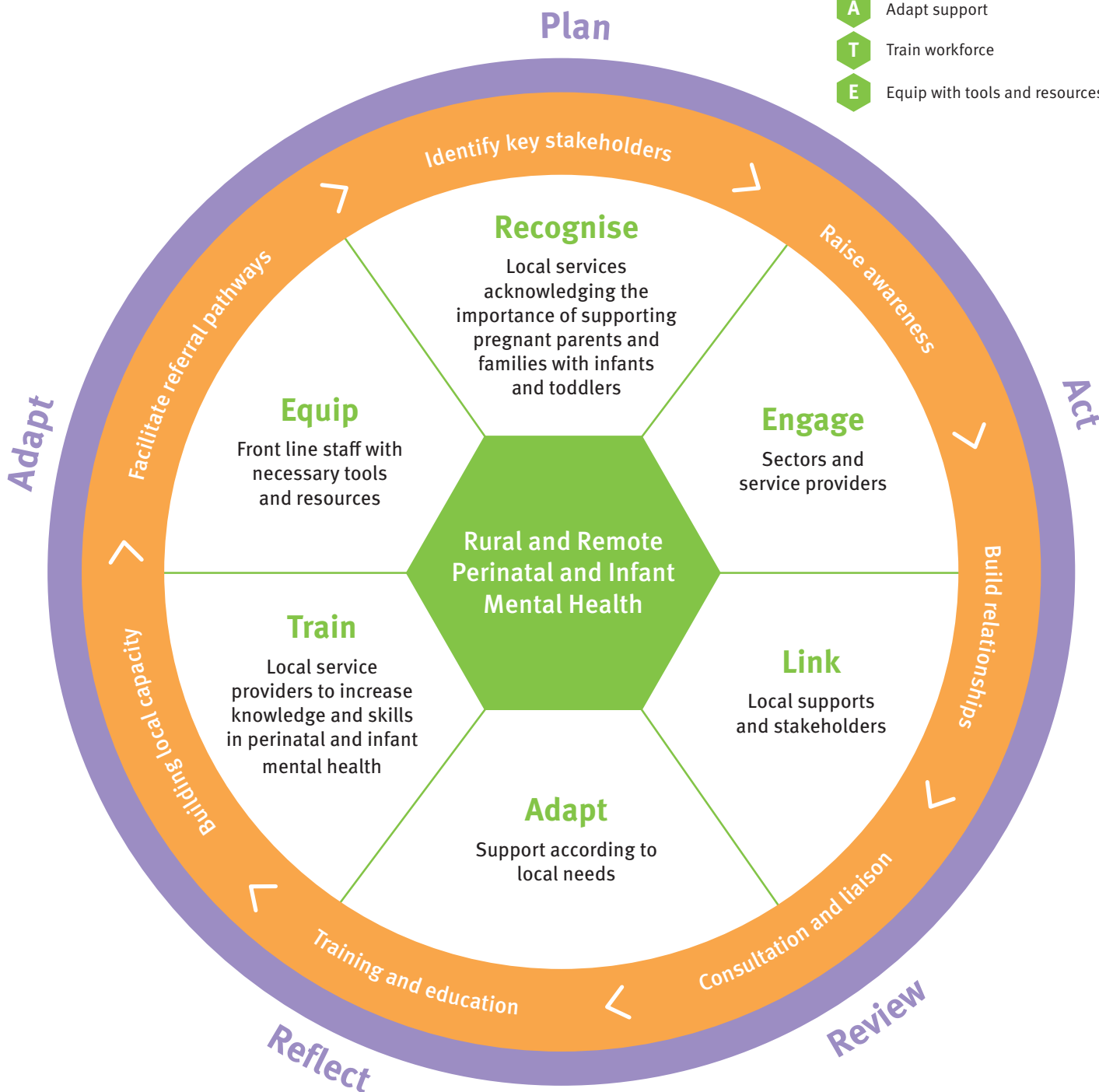


Queensland Centre for Perinatal and Infant Mental Health

Rural and Remote Service Delivery Strategy

The Queensland Centre for Perinatal and Infant Mental Health supports parents, caregivers and communities to have the confidence, knowledge, skills, and resources to support their own wellbeing and raise emotionally healthy and resilient children.

- R** Recognise key stakeholders
- E** Engage sectors
- L** Link services
- A** Adapt support
- T** Train workforce
- E** Equip with tools and resources



Developed by the Queensland Centre for Perinatal and Infant Mental Health (QCPIMH), Children's Health Queensland Hospital and Health Service, with the support of the National Perinatal Depression Initiative.
© Queensland Government February 2017

