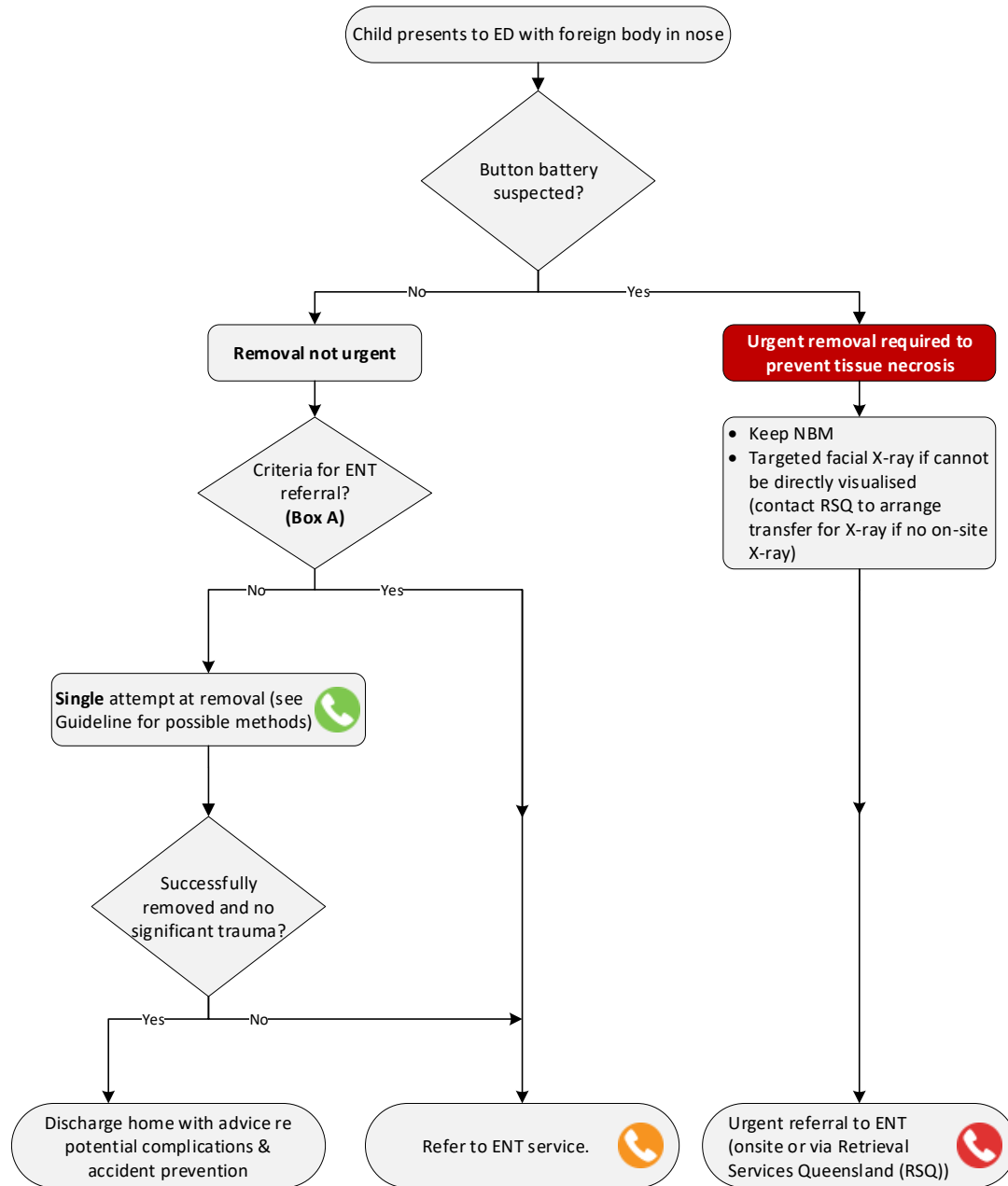


Queensland Paediatric Flowchart

Emergency

Foreign body in the nose – Emergency management – Flowchart



Box A: Criteria for ENT referral
 Refer a child with the following foreign bodies to ENT (do not attempt removal in ED):

- posterior and not easily visualised
- paired magnets or magnet and metallic object across nasal septum
- chronic or impacted with marked inflammation
- penetrating or hooked
- remain despite multiple attempts at removal prior to ED presentation

Consider seeking senior emergency/ ENT advice as per local practices

Refer to onsite/local ENT as per local practices.

Refer to ENT (onsite or via Retrieval Services Queensland (RSQ) on 1300 799 127) for urgent removal

CHQ-GDL-60022- Appendix 1 V1.0

For more information refer to [CHQ-GDL-60022 – Foreign body in the nose – Emergency management](#)

