

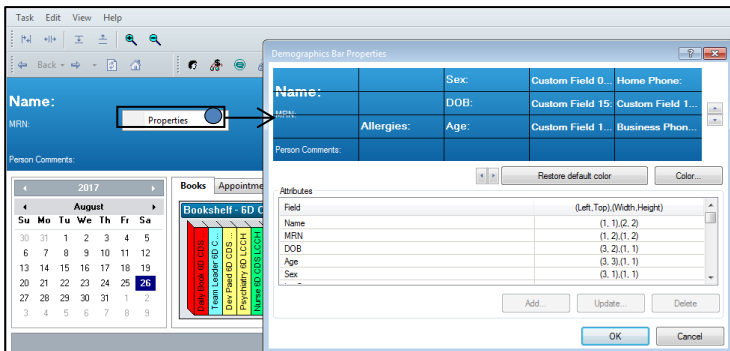


Setting patient demographic bar

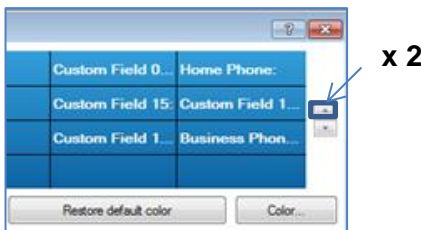
This guide outlines how to customise the patient demographic bar. The demographic bar should be used consistently with endorsed themes and colours only.

Patient demographic bar properties

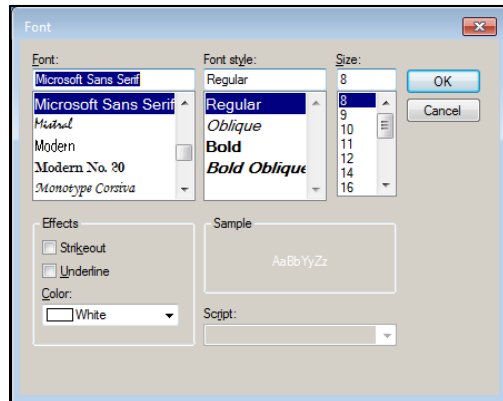
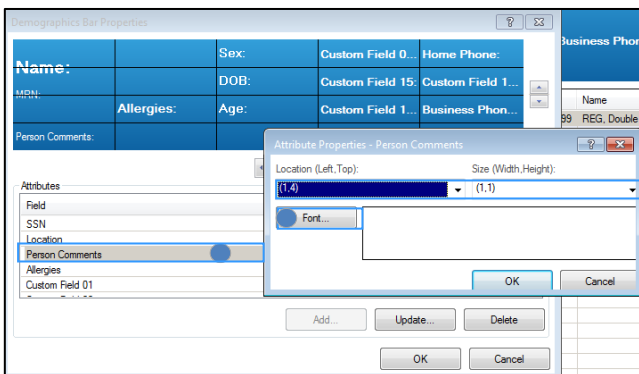
1. On the patient demographic bar, right click, select properties.



2. To the right of the blue banner, click the up arrow twice to ensure you have 4 vertical grids visible



3. Locate person comments from the attributes menu, click add. Under location, select (1,4). Under size select (1,1).



4. In the attributes pane, repeat the above steps with the following settings, ensuring you click update prior to changing the default settings:

Field	(Left, Top), (Width, Height)
Name	(1,1), (1,1)
MRN	(1,2), (1,1)
DOB	(3,2), (1,1)
Age	(3,3), (1,1)
Sex	(3,1), (1,1)
Home phone	(5,1), (1,1)
Allergies	(2,2), (1,1)
Person comments	(1,4), (1,1)
Custom field 01 (Deceased)	(2,1), (1,1)
Custom field 02 (Alerts)	(2,,3), (3,1)
Custom field 09 (Language spoken)	(4,1), (1,1)
Custom field 15 (Interpreter required)	(4,2), (2,1)
Custom field 16 (Indigenous status)	(4,3), (1,1)
Custom field 17 (Mobile phone)	(5,2), (1,1)
Custom field 18 (CurrentED/Inpatient)	(2,1), (1,1)
Custom field 19 (Portal flag)	(5,3), (1,1)

Users must not change the default colours of the patient demographic bar, as this forms part of the patient's medical record.

