

PowerTrials: POM – opening for accrual

Quick reference guide

Research studies are opened for accrual within *POM* through the *Milestones* window. Patients cannot be enrolled onto a study until the study has been opened for accrual.

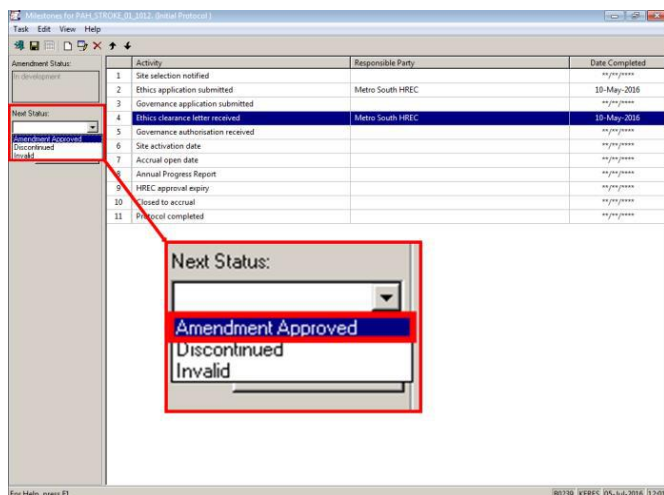
1. With the relevant protocol or amendment selected from within the *Initiating Service* folder, click the *Milestones* icon from the toolbar.

The *Default Milestone* window will open.

2. Update milestones as required – refer to *POM 7 Milestones QRG* for assistance if required.

Note: All relevant milestones up until this point should be recorded, particularly application submissions and authorisation dates.

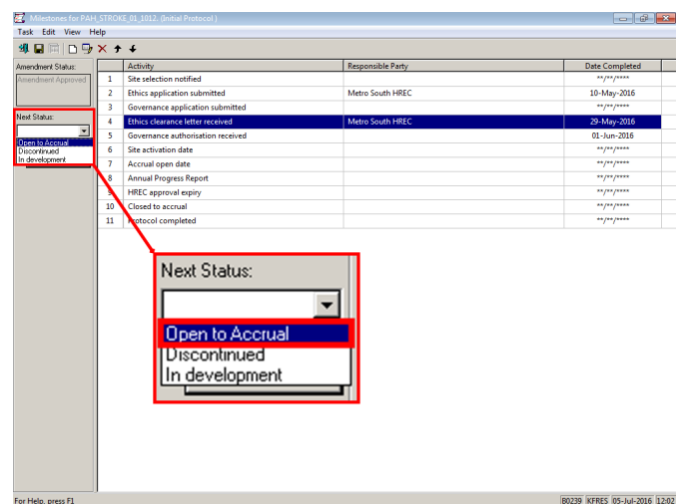
3. If not already done, change *Amendment Status* from *In Development* to *Amendment Approved* in the *Next Status* dropdown menu.



4. Click *Apply*.

Note: that the Amendment Status box now reads **Amendment Approved**. This means that the protocol can now be opened up for Accrual.

5. Complete the *Accrual Open Date* milestone.
6. Select *Open for Accrual* from *Next Status* dropdown menu.



7. Click *Apply*.
8. Click *Save*.

The protocol is now opened for accrual and patients can be enrolled.

