



CHEAT SHEET

How to save allergy favourites

ATTENTION PLEASE



All clinical staff using the ieMR

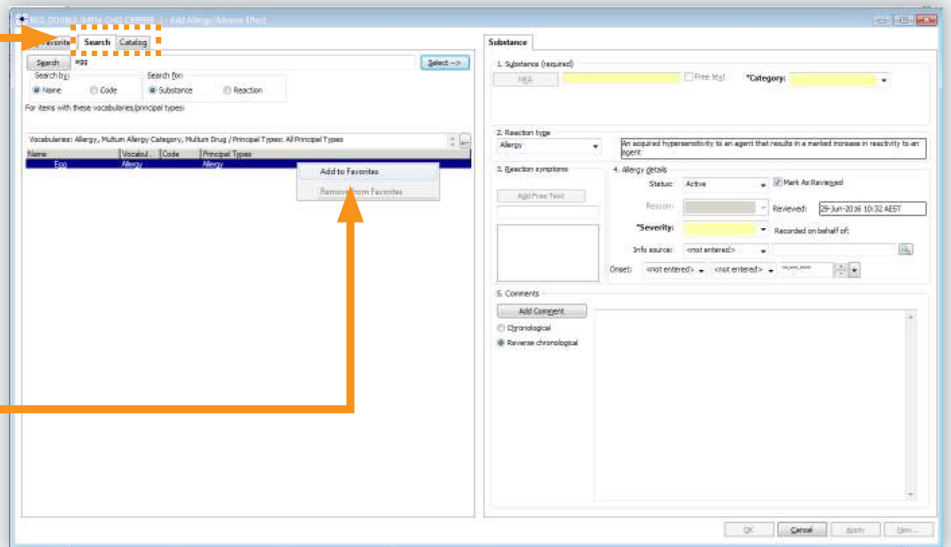
Read on...

When searching for an allergy you use frequently, consider adding it to your favourites to save time searching the catalogue next time you apply it to another patient.

The ieMR is the source of truth for allergies at Children's Health Queensland and it's really important all allergies are recorded.

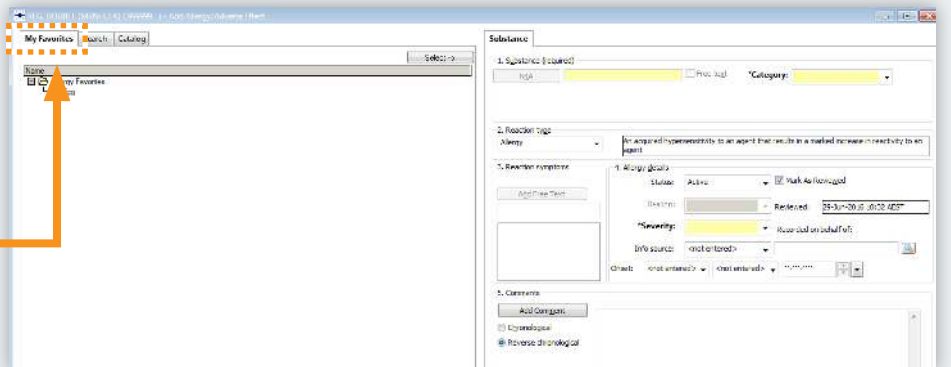
How to save allergy favourites

- 1 Search for the allergy you wish to add using either the 'Search' tab or the 'Catalog' tab
- 2 Right mouse click on the allergy to show the menu. Click 'Add to Favorites'



How to find allergy favourites

Allergy favourites are located under the 'My Favorites' tab



SAFETY ALERT



Do add allergies to your favourites as you go



Do Not set up allergy favourites in one go by adding them all to one patient

Questions, or want more info? The ieMR team is here to help!

Mon-Fri: 8am-4.30pm

3068 1999 | CHQ_digitalfuture@health.qld.gov.au

