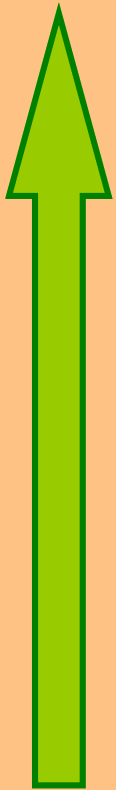


Week Three

Middle Ear Disease—Impacts

Impacts of middle ear disease



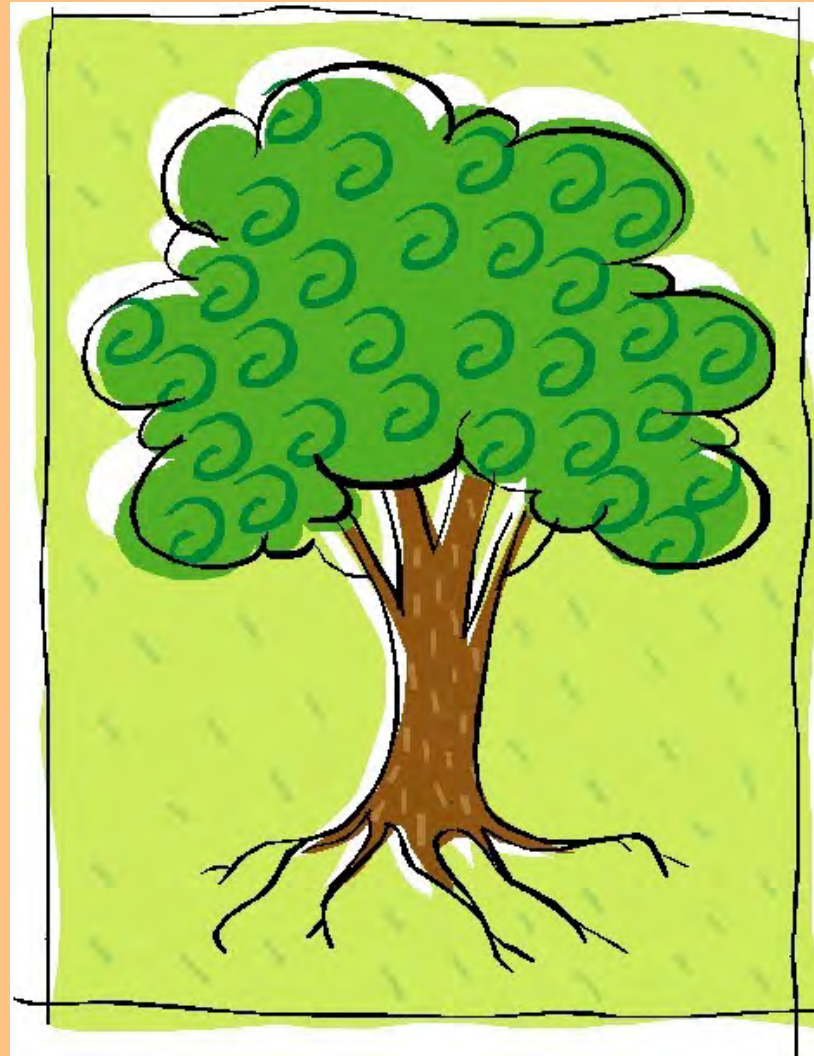
Strong Futures

Deadly Schooling

Solid Talking

Good Hearing

Healthy Ears



Impacts of middle ear disease: Talking Points

- Healthy ears are important for a strong future, just like strong roots help a tree to grow well.
- Middle Ear Disease makes hearing difficult.
- Kids' brains develop most rapidly in the first four years—but this is also when kids are most likely to get Middle Ear Disease.
- Trouble hearing in this important time of brain growth has a big impact on kids learning how to talk, listen, and play.
- When kids find it hard to communicate and socialise, it can make school a lot harder for them. This can affect self-esteem.
- We can help by knowing the signs of Middle Ear Disease and taking kids to a health centre if we're concerned.

Activity Three: Handprint Apple Trees

1

What you will need

1. A3 sheets of paper, (1 per child)
2. Green, brown, yellow & red paints
3. Paint brushes, markers and glue
4. Plastic container lids or plates
5. Cut outs of small apples (optional)



2

Getting set up

1. Set out trays with different coloured paints for hand painting
2. Have paint brushes available too
3. Provide a marker and apples for parents to write their child's strengths on apples to stick on the tree once complete, (optional).



3

Make a tree!

1. Parents can help their children paint the trunk of the tree.
2. children can then dip their hands in the green paint to make handprint leaves.
3. They can paint on fruit or stick on apple cut outs.

