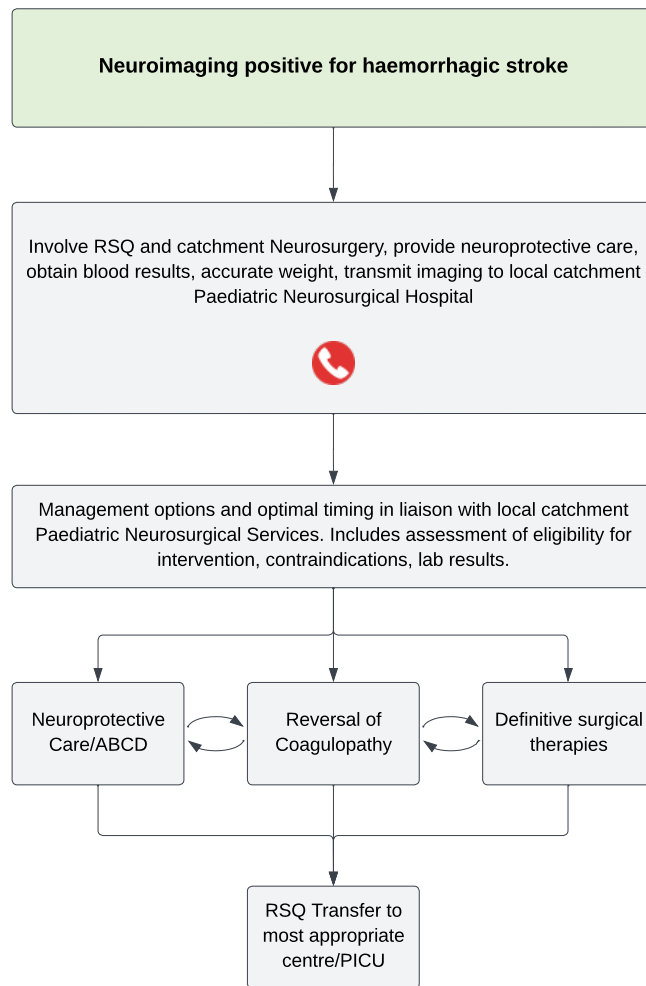





Paediatric Stroke - Emergency management in children – Haemorrhagic Stroke Positive Flowchart



 Consider seeking senior emergency/paediatric advice as per local practices

 Seek senior emergency/paediatric advice as per local practices. Consider contacting paediatric critical care

 Seek urgent paediatric critical care advice (onsite or via Retrieval Services Queensland (RSQ) on 1300 799 127)

CHQ-GDL-00734 Paediatric Stroke - Emergency Management in Children - Flowchart 4: Haemorrhagic Stroke Positive V1.0

For more information refer to [CHQ-GDL-00734 Paediatric Stroke – Emergency management in children](#)

