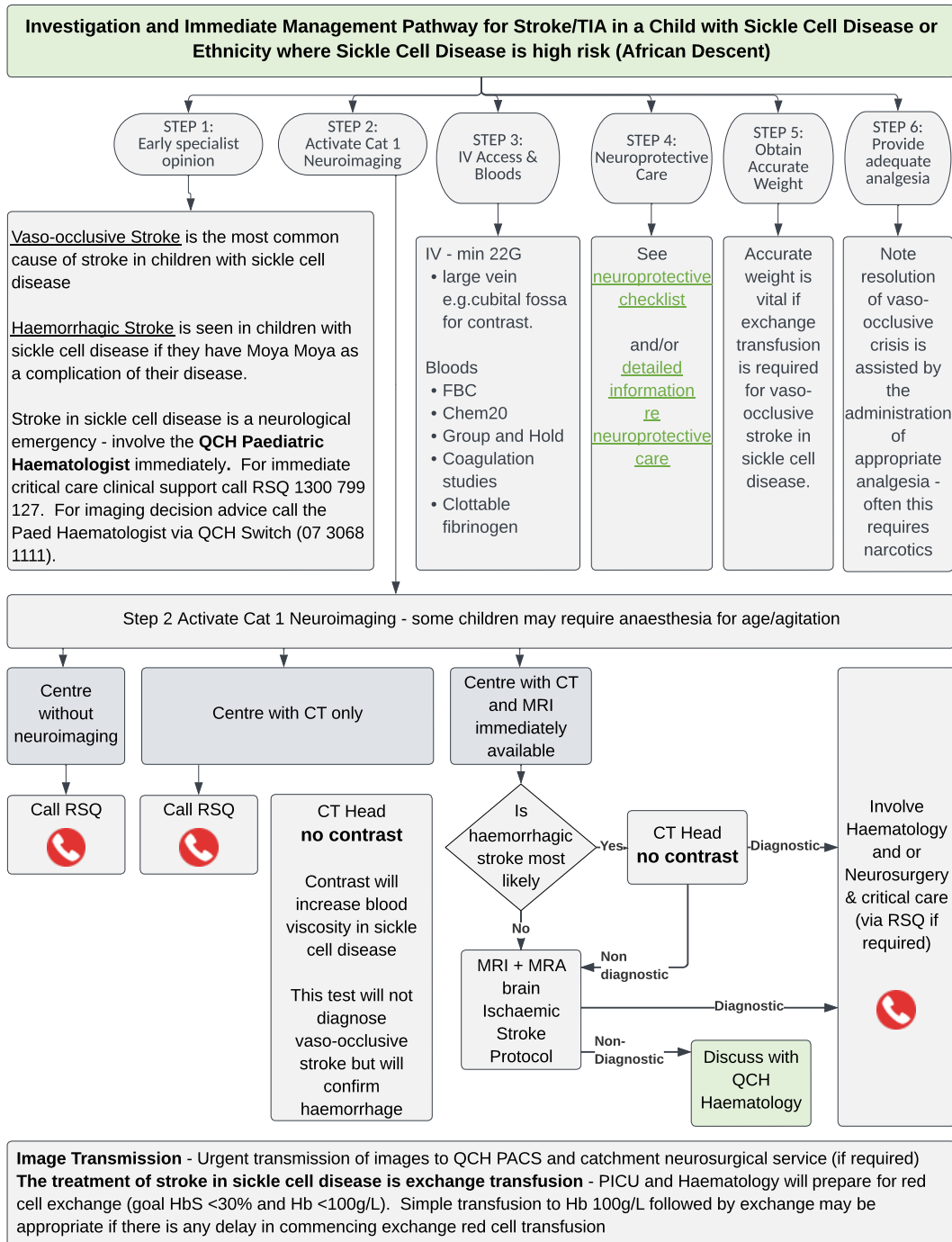


# Paediatric Stroke - Emergency management in children – Sickle Cell Flowchart



Consider seeking senior emergency/paediatric advice as per local practices

Seek senior emergency/paediatric advice as per local practices. Consider contacting paediatric critical care

Seek urgent paediatric critical care advice (onsite or via Retrieval Services Queensland (RSQ) on 1300 799 127)

CHQ-GDL- 00734 Paediatric Stroke - Emergency Management in Children - Flowchart 7: Sickle Cell V1.0

